

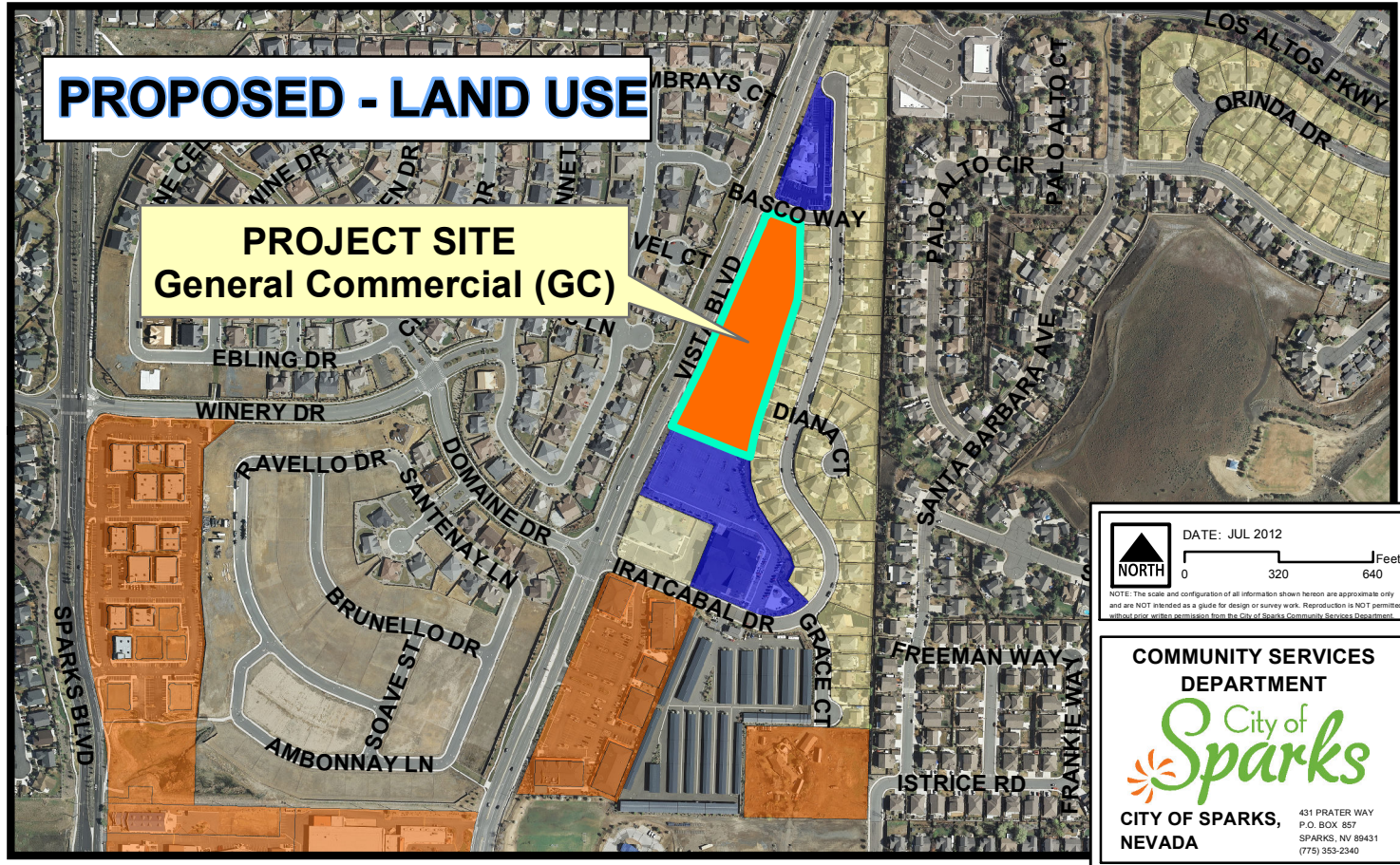
# EXISTING - LAND USE


**PROJECT SITE**  
Office Professional (OP)



# PROPOSED - LAND USE

**PROJECT SITE**  
General Commercial (GC)



 DATE: JUL 2012

0 320 640 Feet

NOTE: The scale and configuration of all information shown herein are approximate only and are NOT intended as a guide for design or survey work. Reproduction is NOT permitted without prior written permission from the City of Sparks Community Services Department.

COMMUNITY SERVICES  
DEPARTMENT



CITY OF SPARKS,  
NEVADA

431 PRATER WAY  
P.O. BOX 857  
SPARKS, NV 89431  
(775) 353-2340